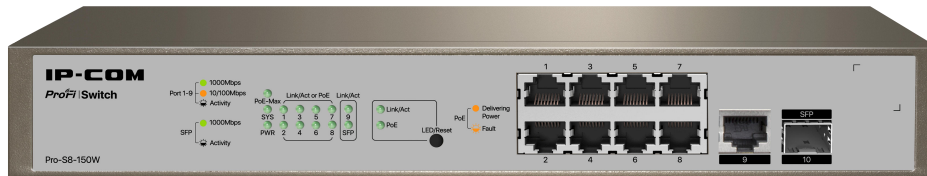


IP-COM

**Pro-S8-150W
ProFi Switch**

Pro-S8-150W ProFi Switch



Descriptions

Pro-S8-150W is a Gigabit switch with 8-port PoE of IP-COM ProFi software controller switch series, specially designed for such scenarios as SMBs and smart hotels. The switch can offer PoE output power up to 130W and support centralized control and management by IP-COM ProFi software controller, allowing users to deploy the network.

Features

- ◎ Comply with IEEE 802.3, IEEE 802.3u, IEEE 802.3ab, IEEE 802.3z, IEEE 802.3x, IEEE 802.1p, IEEE 802.1q, IEEE 802.1w, IEEE 802.1d, IEEE 802.1s, IEEE 802.3af/at standards
- ◎ 9 x 10/100/1000 Base-T Ethernet ports , 1 separate 1000 Base-X SFP ports
- ◎ 16 K MAC address table and MAC address auto-learning
- ◎ 12Mb large buffer
- ◎ Support abundant services, such as static routing, VLAN, IGMP, QoS, ACL, DHCP Snooping, ARP and Telnet
- ◎ Support ProFi Soft Controller management and local web visualization management

USPs



Routing Protocol

The switch Support static routing protocol which support layer-2 isolation and layer-3 intercommunication, thus achieving efficient and fast layer-3 forwarding.



Centralized Management

Support centralized management and device status monitoring by the ProFi controller, and support remote access to cloud services, which is not restricted by the installation location of the device.



Smart PoE power supply

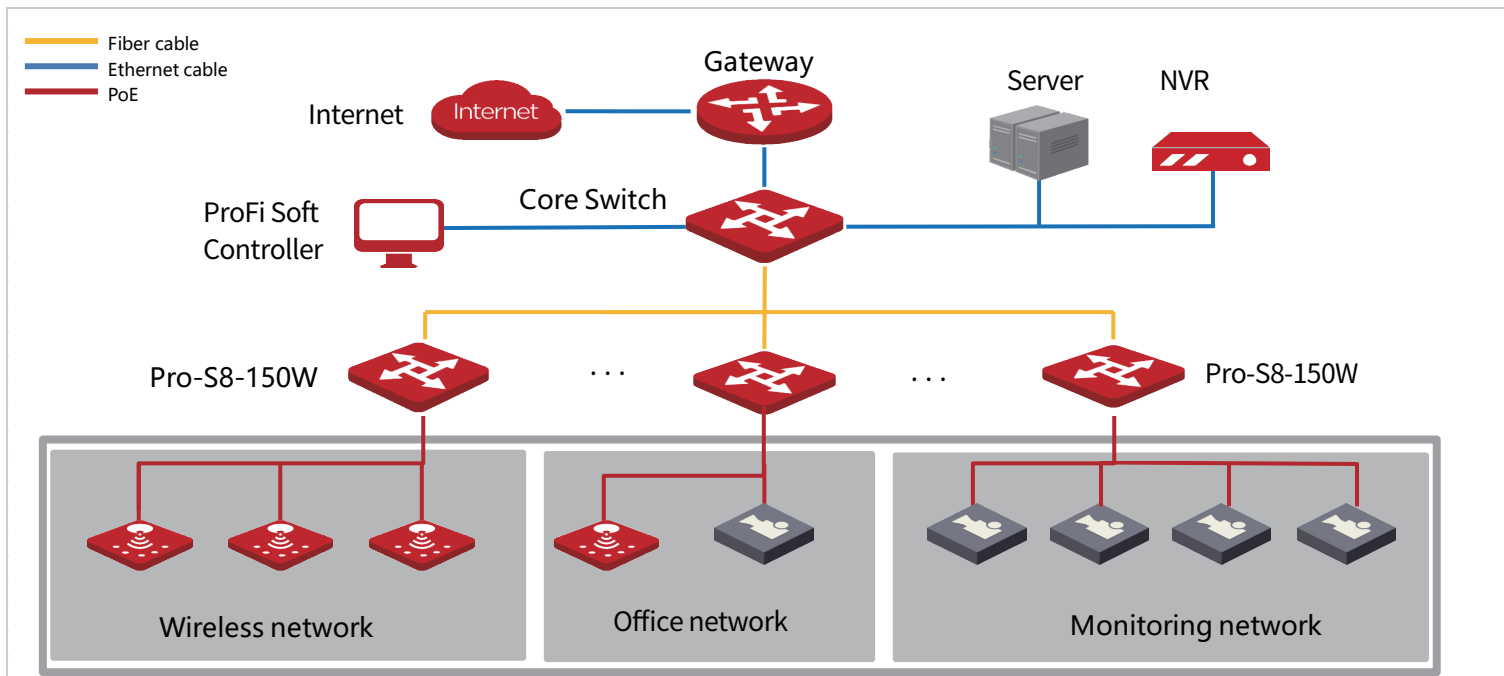
It provides 8 Gigabit PoE ports that comply with the IEEE802.3AF/AT standards. The maximum output of the whole switch is 130W, and the maximum output power of a single port is 30W. Users can flexibly set PoE power supply time, that means the PoE power supply can turned on or off at regular intervals.



Visualization

The system can generate a network topology automatically. It support IP camera discovery based on ONVIF protocol and network device discovery based on LLDP, as well as online/offline status detection for all devices in the network, which improves the LAN operation and maintenance efficiency and also reduces the maintenance cost.

Application



Specifications

Product Model	Pro-S8-150W
Hardware specifications	
Network standards	IEEE802.3、IEEE802.3u、IEEE802.3ab、IEEE802.3z、IEEE802.3x、IEEE802.3af/at、IEEE802.1p、IEEE802.1q、IEEE802.1w、IEEE802.1d、IEEE802.1s
LED indicators	One Link/Act or PoE LED indicator for each port One Link/One Link/Act mode converting LED indicator for each device One PoE mode converting LED indicator for each device One PoE Max LED indicator for each device One Power LED indicator for each device One SYS LED indicator for each device
Fixed ports	9 x 10/100/1000 Base-T Ethernet ports 1 x 1000 Base-X SFP port
Port lightning protection	≥6kV
Forwarding mode	Store-and-forward
MAC address table	16K
Packet buffer	12Mb
Switching capacity	20Gbps
Packet forwarding rate	14.9Mpps
PoE power supply	Ports 1 to 8 support IEEE 802.3af/at standard PoE power supply 1 2 4 5 +, and 3 6 7 8 -
Input voltage	100-240V AC 50/60Hz
Dimensions (W x D x H)	294 mm x 179.6 mm x 44 mm
Whole switch consumption	Whole switch consumption: <150W Maximum PoE output power: 130 W
Operating environment	Operating temperature: 0°C - 40°C Storage temperature: -40°C - 70°C Operating humidity: (10% - 90%)RH, non-condensing, Storage humidity: (5% - 90%)RH, non-condensing

Software specifications	
PoE power supply management	<ul style="list-style-type: none"> Port PoE configuration and power supply with priority PoE over-temperature protection PoE scheduled management Support intelligent and graphical management and PoE-powered device detection (port status, power assignment and PoE-powered device status)
Security features	<ul style="list-style-type: none"> Support ARP receiving limit Support unknown mac address discard Support DoS attack defense Support 802.1x security authentication Support RADIUS authentication
VLAN	<ul style="list-style-type: none"> IEEE 802.1Q VLAN VLAN Layer-3 interfaces Support three port modes: Access, Trunk and Hybrid
DHCP	<ul style="list-style-type: none"> Support DHCP server Support DHCP relay Support DHCP snooping Support Option 82 policy configuration
Routing	<ul style="list-style-type: none"> Support inter-VLAN routing Support IPv4 static routing Support dynamic ARP and static ARP Support ARP aging configuration
Port aggregation	<ul style="list-style-type: none"> Support static aggregation Support LACP dynamic aggregation Support a maximum of 32 aggregation groups and a maximum of 8 member ports in each group
STP (Spanning Tree Protocol)	<ul style="list-style-type: none"> Support IEEE 802.1d STP (Spanning Tree Protocol) Support IEEE 802.1w RSTP (Rapid Spanning Tree Protocol) Support IEEE 802.1s MSTP (Multiple Spanning Tree Protocol) Support edge ports Support BPDU statistics Support BPDU Guard, BPDU Filter, Support Root Guard, Loop Guard, and Loopback-detection
Multicast	<ul style="list-style-type: none"> IGMP Snooping V1/V2/V3 Support port fast leave

Software specifications	
Port Mirroring	Support N: 1 port mirroring
QoS	<ul style="list-style-type: none"> Support SP (Strict Priority) Support SWRR (Simple Weighted Round Robin) Support WRR (Weighted Round Robin) Support 802.1p port trust mode Support DSCP port trust mode Support a maximum of 8-queue service quality mapping Support Tail Drop Support storm suppression Support port speed limit
ACL	<ul style="list-style-type: none"> Support MAC ACL Support IPv4 ACL
Loading and upgrade	<ul style="list-style-type: none"> Support FTP/TFTP/HTTP upgrade Support configuration import and export
Local visualization management	<ul style="list-style-type: none"> Support discovery of such network devices as routers, switches, APs based on LLDP Support IP camera discovery based on ONVIF protocol Support automatic generation of topology Support local view and main view Support online/offline status detection for devices Support remotely rebooting IP cameras Support loop alerts Support custom device types and device names
Management and maintenance	<ul style="list-style-type: none"> Support centralized control and management by ProFi software controller, Support CLI configuration Support Telnet remote configuration Support SNMP V1/V2/V3 Support web management and maintenance Support system logs Support log classification Support NTP Support Ping & Tracert tests Support memory and CPU monitoring
Certifications	FCC、CE、RoHS

IP-COM
World Wide Wireless

IP-COM NETWORKS CO., LTD.

Tower E3, No.1001, Zhongshanyuan Road,
Nanshan District, Shenzhen, China. 518052

Service: info@ip-com.com.cn

Inquiry: marketing@ip-com.com.cn

Tel: +86-755-27653089