

86 Inch Smart Interactive Display

MW3586-U-E2



Features

- 4K display: 4K UHD anti-glare display delivers images with extreme detail.
- Zero lamination technology with less than 1mm gap between the cover glass and display panel effectively reduces light refraction and brings better visuals.
- Ultra-narrow and equal-width bezel design for perfect aesthetics.
- Minimalist geometric line design and smooth border outline, elegant and attractive.
- (Optional) Professional 4K HD camera for immersive remote collaboration.
- (Optional) Omni-directional 8-microphone array with 8-meter pickup distance.
- Dual Wi-Fi modules with both Wi-Fi and hotspot support for other mobile devices.
- Dual treble channels and dual bass channels provide cinematic sound effects.
- High-precision infrared touch technology allows up to 40-point touch, realizing smooth co-authoring.
- Bluetooth 5.2 offers higher data transmission rate and lower power consumption.
- Android 13.0 system offers user-friendly GUI.
- A variety of quick tools improve usability and interaction efficiency, such as annotation, screenshot, etc.
- Wireless screen mirroring from various operating systems such as Android, iOS, and Windows to the display with one touch.
- Fast file transfer allows users to quickly transfer files to the display via a QR code.
- OTA remote upgrade allows the system to be upgraded online.
- Supports NFC screen projection
- EDLA Certified.

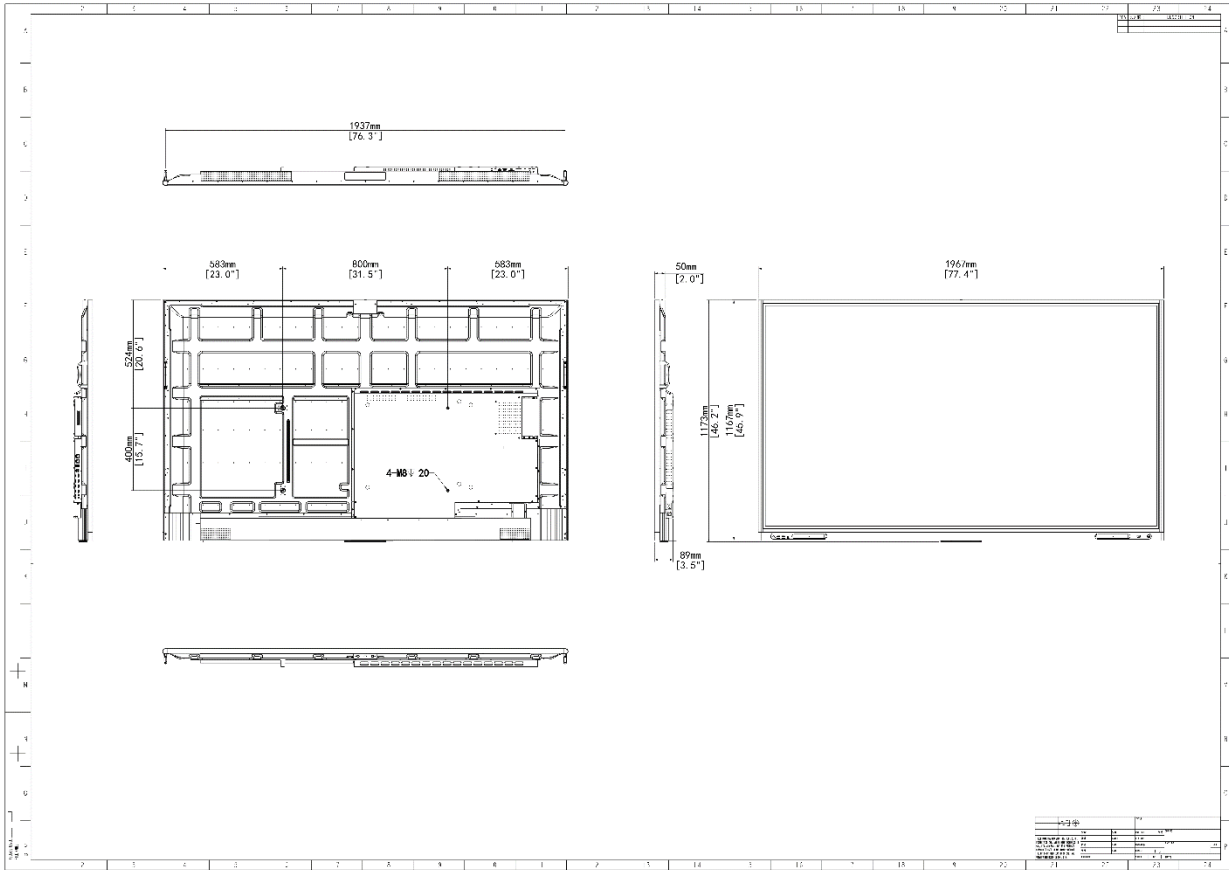
Specifications

| Model | MW3586-U-E2 |
|---------------------------------|--|
| Panel | |
| Backlight | DLED |
| Panel Size | 86" |
| Resolution | 3840 × 2160 |
| Display Size (mm) | 1895.04 × 1065.96 |
| Brightness (cd/m ²) | 350 |
| Contrast Ratio | 1200 : 1 |
| Response Time (ms) | 8 |
| Color Support | 1.07 B |
| Viewing Angle (H/V) | 178°/178° |
| Glass | 4mm Single-side anti-glare tempered glass |
| Lifespan (h) | 50000 |
| Pixel Pitch (H × V) (mm) | 0.49 × 0.49 |
| Refresh rate (Hz) | 60 |
| Color Gamut | 72% |
| Surface Hardness | 9H (7 on the Mohs scale) |
| Haze Value | 25% |
| Touch | |
| Touch Control | Up to 40-point multi-touch (WIN: 40-point, Android: 32-point) |
| Touch Precision (mm) | ±1 |
| Touch technology | Infrared touch |
| Touch Response Time (ms) | ≤ 2 (frame rate > 500Hz) |
| System | |
| CPU | 4 × A76 (2.4G) and 4 × A55 (1.8G) |
| CPU Frequency | 2.4 GHz |
| RAM/ROM | 8GB/128GB |
| Operation System | Android 13.0 |
| Interface | |
| Video Input | 2 × HDMI video input 1 × DP video input 1 × VGA video input 1 × YPbPr video input 1 × USB TypeC (Include DP) |
| Video Output | 1 × HDMI video output 1 × DP video output |
| Audio Input | 1 × PC audio input, 3.5mm interface 1 × LINE IN, 3.5mm interface 1 × MIC (3.5mm & EARPHONE Shared interface) |
| Audio Output | 1 × Earphone audio output, 3.5mm interface 1 × LINE OUT, 3.5mm interface |

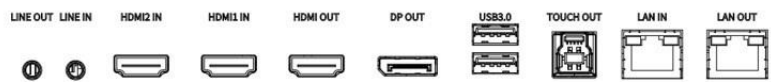
| | |
|-------------------------------------|---|
| | 1 × SPDIF digital audio output (coaxial interface) |
| Other Interfaces | 4 × USB3.0 1 × USB Type-B 1 × USB Type-C 1 × RS232 1 × TF card slot |
| Network | 2 × RJ45, Supports 10M/100M/1000M Base-T self-adaptive |
| Front Interfaces | 2 × front USB3.0 1 × Type-C |
| Audio | |
| Speaker | Left channel: 1 × treble (5W) + 1 × bass (12W) Right channel: 1 × treble (5W) + 1 × bass (12W) |
| Wi-Fi | |
| Wi-Fi Configuration | Wi-Fi 6 + Wi-Fi 5, supports 2.4GHz/5GHz |
| Wi-Fi Performance | 30m ² coverage, 20m transmission distance in open space |
| Bluetooth | |
| Bluetooth Version | 5.2 |
| Bluetooth Performance | 10m transmission distance in open space |
| OSD | |
| Multi-Language | Supports 27 languages, including Simplified Chinese, Traditional Chinese, English, Japanese, Arabic, French, Spanish (ES-ES), Spanish (ES-MX), Portuguese (ES-ES), Portuguese (ES-MX), German, Italian, Dutch, Polish, Korean, Catalan, Galician, Vietnamese, Bulgarian, Kazakh, Russian, Ukrainian, Thai, Uzbek, Hungarian, Croatian, and Romanian |
| VESA | |
| Wall Mount Hole (mm) | 800 × 400 |
| Wall Mount Screw | 4-M8 screw hole |
| General | |
| Power Supply | AC 100 to 240 V, 50/60 Hz |
| Overall Power Consumption (W) | ≤365 (without OPS) |
| Standby Power Consumption (W) | <0.5 |
| Product Dimensions (W × H × D) (mm) | 1967 × 1167 × 89 |
| Package Dimensions (W × H × D) (mm) | 2117 × 1336 × 247 |
| Operating Temperature | 0 to 50°C |
| Weight (kg) | Net weight: 68.0 Gross weight: 79.2 |
| Operating Humidity | 10% to 90% (non-condensing) |
| Storage Temperature | -20 to 60°C |
| Storage Humidity | 0% to 95% (non-condensing) |
| Accessories Included | 1 × Power Cable, 2 × Touch Pen, 1 × Quick Guide, 1 × Infrared Remote Control, 1 × Wall Mount |

| | |
|---------------|-------------------------------------|
| | Bracket |
| Certification | |
| Certification | CE-EMC, CE-RED, CB/LVD, FCC, FCC-ID |

Dimensions



Interface



Right main board interfaces



Bottom main board interfaces



Left front interfaces



Right front interfaces

Ordering Info

| Product Model | Description |
|---------------|---|
| MW3586-U-E2 | 86 Inch Smart Interactive Display, Camera, projection device, OPS computer, floor stand, and smart pen need to be additionally configured |

Unlimited New View

Zhejiang Uniview Technologies Co., Ltd.



<http://www.uniview.com>



overseasbusiness@uniview.com; globalsupport@uniview.com



No. 369, Xietong Road, Xixing Sub-district, Binjiang District, Hangzhou City, 310051, Zhejiang Province, China



©2023-2025 Zhejiang Uniview Technologies Co., Ltd. All rights reserved.

*Product specifications and availability are subject to change without notice.

*Despite our best efforts, technical or typographical errors may exist in this document.

Uniview cannot be held responsible for any such errors and reserves the right to change the contents of this document without prior notice.